



Original Full Paper

Morphological and Immunophenotypical Characterization of Murine Mammary Carcinoma 4T1

Cristina Maria de Souza Garcia¹, Marina Rios de Araújo¹, Miriam Teresa Paz Lopes²,
Mônica Alves Neves Diniz Ferreira¹, Geovanni Dantas Cassali^{1*}

¹Department of General Pathology, Laboratory of Comparative Pathology, Biological Sciences Institute, Federal University of Minas Gerais, Belo Horizonte, Minas Gerais, Brazil

²Department of Pharmacology, Laboratory of Antitumor Substances Biological Sciences Institute, Federal University of Minas Gerais, Belo Horizonte, Minas Gerais, Brazil.

* Corresponding Author: Geovanni Dantas Cassali, Caixa Postal 486, 31270-901 Belo Horizonte, MG, Brazil. Tel.: +5531 34092891; fax: +5531 3409287. E-mail address: cassalig@icb.ufmg.br

Submitted September 18th 2014, Accepted November 22nd 2014

Abstract

The 4T1 murine mammary carcinoma is an experimental model widely used in assessing and better understanding of tumor biology. It is a highly tumorigenic cell line and invasive, where metastases are observed in various organs. This study aims to describe morphological and immunophenotypical aspects of 4T1 mammary carcinoma in mice Balb/c with the aid of the immunohistochemistry. Tissues were fixed in formalin and processed using the routine paraffin inclusion technique. Histologic sections (4 µm) were stained through Hematoxylin-Eosin techniques for morphologic assessments. For immunohistochemical study, we used a panel of 9 (nine) antibodies: hormone receptors, receptors for cell proliferation, cytokeratins, vimentin, growth factor receptor and markers of blood vessels. Morphologically, the 4T1 murine mammary carcinoma shows malignant epithelial proliferation in solid arrangement, with pleomorphic cells and high mitotic index. In immunohistochemical analysis was determined a positivity for hormone receptors, cytokeratin AE1/AE3, receptors of cell proliferation and markers of blood vessels. There was a negative for vimentin, cytokeratin 5/6, cytokeratin 34βE12 and growth factor receptor. The results show that the characteristics observed in this model are similar to some types of breast cancers found in women like poorly differentiated invasive ductal carcinoma. Thus, the immunophenotypic characterization of mammary carcinoma 4T1 allows a better understanding of the model to the study of new anticancer therapies.

Key words: mouse, mammary gland, 4T1 cells and immunohistochemistry.

Introduction

The experimental transplantable tumors have been used in different studies of carcinogenesis (11,27). These tumors are considered appropriate models, and valid in the study of the progression and cancer therapy in different studies (31).

In addition, animals used as a study model have similarities in their physiology, biochemistry, metabolism and genetics in relation to humans, which ensures their use in research contributing to the discovery of new treatments.

Among the various experimental tumors used in research, we highlight the 4T1 murine mammary carcinoma. 4T1 is a highly tumorigenic cell line, little immunogenic with characteristics of growth and metastasis of tumor cells similar to human mammary gland in stage IV (31). Morphologically, the 4T1 mammary carcinoma shows malignant epithelial growth in solid arrangement, characterized by the proliferation of pleomorphic cells and high mitotic index.

Previous studies with the 4T1 tumor demonstrate possibilities for its use as a model in experimental cancer therapy (20, 37). However, research is needed to establish

appropriate proposals for oncological evaluation of this model.

In humans some immunohistochemical markers are known to assist in the characterization of breast cancer, contributing to the predictive and prognostic evaluation of these tumors. These markers include estrogen receptor (ER) (7, 23), progesterone receptor (PR) (7, 23), cytokeratin 5/6 (41), cytokeratin 34βE12 (15), HER-2 (28), MIB-I (38), CD31 (8).

At present, immunohistochemistry is accepted as standard evaluation method worldwide. The immunohistochemistry detects protein products in tissue sections. It enables us to observe protein expression at the individual cell level in the tumor mass (40). With the advent of this tool, the immunophenotypic profile may be useful in understanding the biological character of tumors. In this sense, to our knowledge, this is the first work that describes the morphological and immunophenotypic characteristics of the 4T1 murine mammary carcinoma.

Therefore, this paper aims to describe the immunophenotypic profile of 4T1 murine mammary carcinoma by immunohistochemical technique.

Materials and Methods

4T1 cells (American Type Culture Collection, Manassas, VA) were maintained in RPMI 1640 medium (Hyclone, Logan, UT) containing 10% FBS, at 37°C in a humidified atmosphere of 5% CO₂.

Five female Balb/c mice (6 Weeks, 20g weight) were provided by the Animal Facility Center – Institute of Biological Science – Federal University of Minas Gerais; Belo Horizonte -Brazil. Housing, anesthesia and care were

provided according to guidelines established by local Institutional Animal Welfare Committee.

4T1 cells in log phase of growth were harvested and suspended in PBS at a density of 2.5 x 10⁶ cells/mL. 100 µl of the suspension was injected in the right posterior flank of all animals, to obtain a solid tumor.

After 28 days, necropsy was performed with removal of tumor for histopathological analysis. Tissues were fixed in formalin (10% w/v in phosphate-buffered saline – PBS pH 7.4), processed using the routine paraffin inclusion technique (30). Histologic sections (4 µm) were stained through Hematoxylin-Eosin techniques for morphologic assessments.

Furthermore, sections (4 µm) were obtained and mounted on silanized slides for immunohistochemical study. A panel of antibodies was used (Table 1). Heat-induced epitope retrieval using Dako antigen retrieval solution, pH 6.0 (Dako, Carpinteria, CA, USA), was performed before dipping the sections in a water bath (20 minutes). The slides were then cooled at room temperature for 20 minutes in the antigen retrieval buffer. The sections were incubated at room temperature in 3% (vol/vol) H₂O₂ for 15 min, in primary antibodies for 16 h at 4°C or for 1h at room temperature (Table 1), in a reagent containing secondary antibodies (Advance HRP link, Dako, Carpinteria, CA, USA) for 30 min and a polymer reagent (Advance HRP enzyme, Dako, Carpinteria, CA, USA) for 30 minutes. Between incubations, the slides were washed for 2 x 5 minutes in 10% phosphate-buffered saline solution. The immunoreactivity was visualised using diaminobenzidine (DAB substrate chromogen system, Dako, Carpinteria, CA, USA). The slides were then counterstained with Harris haematoxylin.

Table 1. Panel of antibodies used for immunohistochemistry analysis

Target antigen	Clone	Dilution	Manufacturer	Incubation (Hr) Primary antibody
Cytokeratin AE1/AE3	AE1AE3	1:30	Dako (Carpenteria, CA, USA)	1
Cytokeratin 5/6	D5/16B4	1:50	Dako (Carpenteria, CA, USA)	16
Cytokeratin 34βE12	34β12	1:40	Dako(Carpenteria, CA, USA)	1
Vimentin	V9	1:50	Dako(Carpenteria, CA, USA)	1
ER	1D5	1:30	Dako (Carpenteria, CA, USA)	16
PR	hPRa2	1:20	Neomarkers (Fremont, CA, USA)	1
CDC 47	47DC141	1:300	Neomarkers (Fremont, CA, USA)	1
HER-2 (polyclonal)	NA	1:200	Dako (Carpenteria, CA, USA)	16
CD31	HC1/6	1:40	Fitzerald (Acton, MA, USA)	1

NA: Not Applied

For determining of the expression of ER and PR was used American Society of Clinical Oncology / College of American Pathology (ASCO / CAP) (16), the evaluation of CDC47 was used orientation Souza et al. (36) and CD31 was evaluated according Maeda et al. (24). Evaluation of cytokeratin 34 β E12 was performed according to Ferreira et al. (10). Vimentin and cytokeratin AE1/AE3 antibody was used orientation adapted of Bettini et al. (5). For determining the expression of HER-2 was used the American Society of Clinical Oncology / College of American Pathology (ASCO / CAP) (42).

Positive and negative control slides were included in each batch. As a positive control we used mouse mammary gland known to express of antibody (except HER-2). As positive control for this antibody was used a human mammary carcinoma with overexpression previously known for HER-2. Negative controls were assessed using normal serum (Ultra V Block, Laboratory Vision) as the primary antibody.

Table 2. Immunohistochemical expression of ER, PR, HER-2, CK34 β E12, CKAE1AE3, CK5/6 and vimentin in murine mammary carcinoma 4T1

Antibodies	0	+	++	+++
ER ^a	0/5	5/5	NA	NA
PR ^a	0/5	5/5	NA	NA
HER-2 ^b	5/5	0/5	0/5	0/5
CK34 β E12 ^c	5/5	0/5	NA	NA
CKAE1AE3 ^c	0/5	5/5	NA	NA
CK5/6 ^c	5/5	0/5	NA	NA
Vimentin ^d	5/5	0/5	NA	NA

ER, Estrogen Receptor; PR, Progesterone Receptor; CK, Cytokeratin; NA, Not Applied.

^a 0 < 1% nuclear staining of tumor cells; + > 1% nuclear staining of tumor cells.

^b 0 No staining; + weak, incomplete membrane staining of any proportion of the tumor cells; ++ complete membrane staining that is either non-uniform or weak in intensity but with obvious circumferential distribution in at least 10% of cells, or intense, complete membrane staining of 30% of tumor cells.

^c 0 No staining; + cytoplasmic staining in epithelial cells.

^d 0 No staining; + cytoplasmic staining in mesenchymal cells.

All procedures were performed under the guidelines and with the approval of the Ethics Committee in Animal Experimentation (CETEA/UFMG), protocol 201/09.

Results

All tissue sections were composed of proliferation of the epithelial cells organized in a solid arrangement, with the formation of cords, sheets or clusters surrounded by a fine fibrillar collagenous stroma (Figure 1A). The

tumor cells exhibit moderate pleomorphism and have large, round or ovoid, often vesicular nuclei with single or multiple prominent nucleolus, abundant cytoplasm eosinophilic and indistinct cell borders. The mitotic rate ranged from two to three mitoses per 400x field and atypical mitoses were found. Tumors smaller than 0.5cm were central necrotic areas and inflammatory infiltrated composed of neutrophils and lymphocytes.

The immunohistochemical results for ER, PR, HER-2, CK34 β E12, CKAE1/AE3, CK5/6 and vimentin staining are shown in Table 2. All of the cases evaluated showed cytoplasmic staining for CKAE1/AE3 (Figure 1B), but were stained negative for cytokeratin 5/6 (5/5), cytokeratin 34 β E12 (5/5) and vimentin (5/5). The tumors cells showed nuclear expression of hormonal receptors, ER (5/5) (Figure 1C) and PR (5/5). Negative staining for HER-2 was observed in all of the cases. The proliferation index determined from the amount of nuclear staining for CDC47 ranged from 33.8% to 61.2% (mean 47.8%) (Figure 1D). The assessment of the vascularization of the tumors performed by determining the number of vessels in sections (five animals) staining for CD31 was of 13.96 vessels/field.

Discussion

Numerous models have been developed for breast cancer research. All of these models to address key elements in the biology of breast cancer development and progression (18). The 4T1 murine mammary carcinoma is a widely used experimental model for characterization of cellular and molecular events during neoplastic progression (20,37). However, in literature there are few data on the morphological and immunophenotypical characteristics of 4T1 murine mammary carcinoma.

Morphologically, the 4T1 mammary carcinoma shows malignant epithelial growth in solid arrangement, characterized by the proliferation of pleomorphic cells and high mitotic index. Our results show that the characteristics observed in this model are similar to some types of breast cancers found in women like poorly differentiated invasive ductal carcinoma (32).

Some factors determine the histogenesis and the biologic behavior of neoplasms as hormone receptors, receptors for cell proliferation, cytokeratins, vimentin, growth factor receptor and markers of blood vessels (7,8,28,38). In this study, we evaluated the immunohistochemical expression of several marker proteins.

Staining positive for cytokeratin AE1 / AE3 confirm the epithelial origin of neoplasia. Cytokeratin 5/6 and cytokeratin 34 β E12 stain the basal layer of normal breast ductal epithelium (15,41). CK 34 β E12 is a widely used robust monoclonal antibody that identifies a number of high-molecular-weight keratins. CK 34 β E12 recognizes basal keratins, including CK1, CK5, CK10 and CK14. CK5 and CK14 are widely used markers of basal

phenotype (25). In present study, the immunostaining for cytokeratin 5/6 and cytokeratin 34 β E12 was negative.

Mehta et al. (25) showed that expression of 34 β E12 predicts disease-free and overall survival in patients with triple-negative tumors (negative immunostaining for estrogen, progesterone and HER-2 receptors). Furthermore, it was observed that women with triple negative tumors that expressed cytokeratin 34 β E12 were associated with good prognosis.

Estrogen and progesterone have a role in normal mammary gland development and these hormones are implicated in the development of mammary tumors (23). In present study the tumors cells showed expression of hormonal receptors, ER and PR. Pervez et al. (29) described that expression these receptors relate to the degree of differentiation, the presence of metastases and response to hormonal therapy. Women with positive

estrogen and receptor progesterone breast cancer has better prognosis than women with breast cancer negative estrogen and progesterone (3).

Immunostaining of MIB-1 is widely used to assess tumor proliferation, and is an established prognostic factor in breast cancer. However, the evaluation of cell proliferation in an animal model most frequently used protein CDC47. Immunohistochemical expression of intranuclear CDC47 protein has been widely studied, and is associated with the stimulation of gene duplication necessary for cell division (9,26). The expression of this receptor is related with cells that are cycling (predominantly G1 and S phases) (19). Our results demonstrated a high proliferation index. In human medicine, Spyrtos et al. (38) described that breast cancers expressing high levels of MIB-1 are associated with worse outcome.

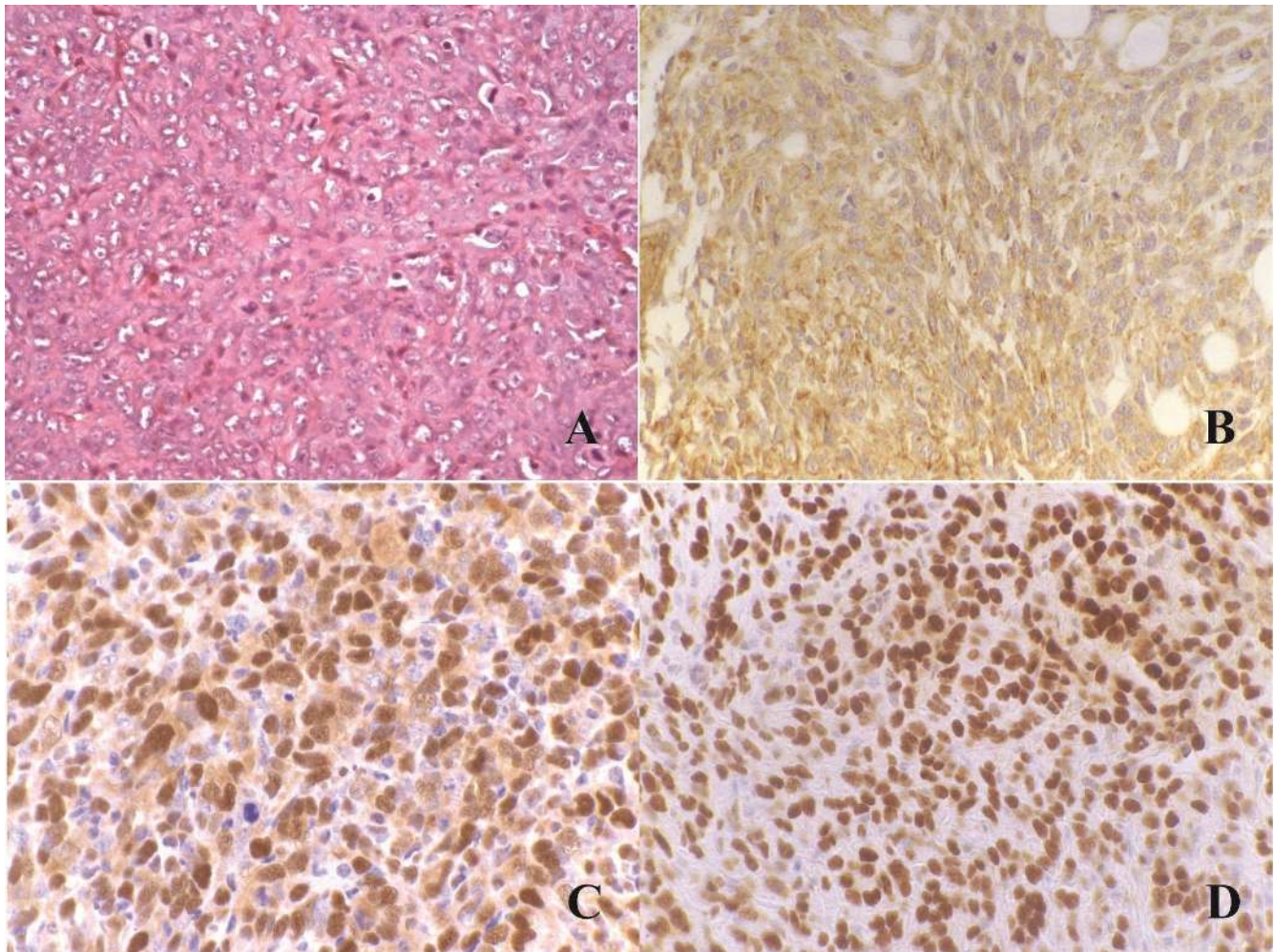


Figure 1. 4T1 tumor. (A) Histopathological analysis tumor 4T1. Observed proliferation of the epithelial cells organized in a solid arrangement. HE, Obj. 40x. (B) Tumor cells characterized by membrane immunostaining for cytokeratin AE1/AE3. Chromogen: DAB. Mayer's Haematoxylin counter stain, Obj. 60x. (C) Tumor cells characterized by nuclear immunostaining for ER. Chromogen: DAB. Mayer's Haematoxylin counter stain, Obj. 60x. (D) Tumor cells characterized by nuclear immunostaining for CDC47. Chromogen: DAB. Mayer's Haematoxylin counter stain, Obj. 60x.

Another important marker CD31 was assessed. The CD31 antibody widely used in the evaluation of vascularization in both normal and neoplastic tissues. Reaction with protein (antigen) localized in the cytoplasm, have clinical applicability as a prognostic factor in several carcinomas, as well as being appropriate in the analysis of angiogenesis in breast tumors (12), colorectal cancer (39) and lung cancer (13). In murine mammary carcinoma 4T1 was observed expression significant of vessels. These results are consistent with human medicine that correlates more angiogenic tumors are more aggressive and worse prognosis (8,12).

Changes in the structure and expression of proto-oncogenes are involved in the origin and progression of tumors. One mechanism is the amplification and overexpression of members of the protein kinase gene family (33). Several tyrosine kinase genes, including HER-2 are amplified in human breast cancer (34). In this study, the immunostaining for HER-2 was negative. These findings are similar to results reported by Heisig et al. (17). These authors used the 4T1 cell line as a negative control for models of stable transfection of her-2 gene. The degree of HER-2 amplification appears to have an effect on survival, with greater copy number being associated with a worse prognosis (34).

Therefore, the results suggest that the immunohistochemical murine mammary carcinoma 4T1 resembles a luminal subtype, as described in humans (6). These authors used immunohistochemistry following definition: basal-like (ER-, PR-, HER-2-, cytokeratin 5/6+, and/or HER-1+), HER-2+/ER- subtype (HER-2+, ER-, PR-), luminal A (ER+and/or PR+, HER-2-), and luminal B (ER+ and/or PR+, HER-2+). These human breast cancer subtypes predict distinct clinical outcomes (35). Thus, the results of this study may also corroborate studies using the 4T1 tumor as a comparative model for the investigation of treatment of breast cancer receptor-positive ER (14, 43).

Curiously, these results were different of the immunohistochemical profile of the primary tumor and metastasis 4T1 as described by Bao et al. (4) and Kau et al. (21), respectively. These authors demonstrated that the metastasis and 4T1 cell line was negative for ER and PR and did not overexpress HER-2 (triple-negative). A possible explanation for this discrepant result may be the fact that they performed their assessment in 4T1 cell lines culture. Furthermore, the assessment of markers used was based on flow cytometry and Western blot analysis. Some authors describe that hormone receptor (ER and PR) status and HER-2 score are differently expressed between the primary tumor and corresponding metastases (1,2), therefore it is reasonable to assume that in vivo and in vitro tumors may present different protein expressions.

Another interesting fact is related with to similarity of immunophenotypic profile of 4T1 tumor with lobular carcinoma. Lakhani et al. (22) describe that the lobular carcinoma are frequently positive for ER and PR

and rarely overexpress HER-2. Furthermore, in contrast to the majority of ductal lesions, lobular neoplasia is negative for E-cadherin in about 80-90% of cases. Approximately 10-16% of cases will express E-cadherin, although this is usually aberrant and this pattern should not be used to make a diagnosis of ductal carcinoma.

The results show that the characteristics observed in this model are similar to some types of breast cancers found in women like poorly differentiated invasive ductal carcinoma. Thus, the immunophenotypic characterization of mammary carcinoma 4T1 allows a better understanding of the model to the study of new anticancer therapies.

Conclusion

Based on the presented data, we may conclude that the morphological analysis of the 4T1 murine mammary carcinoma demonstrated characteristics of a poorly differentiated carcinoma. Similar characteristics can be observed in many cases of women breast cancer. Thus, morphological and immunophenotypical characterization of the 4T1 mammary carcinoma promotes a better understanding of the murine model for women breast cancer and enables tumoral behavior and new anticancer therapy studies.

Acknowledgement

This work was supported in part by Fundação de Amparo a Pesquisa de Minas Gerais (FAPEMIG), Conselho Nacional de Desenvolvimento Científico e Tecnológico (CNPq) and Coordenação de Aperfeiçoamento de Pessoal de Nível Superior (CAPES).

References

1. AITKEN SJ., THOMAS JS., LANQDON SP., HARISSON DJ., FARATIAN D. Quantitative analysis of changes in ER, PR and HER2 expression in primary breast cancer and paired nodal metastases. **Ann. Oncol.**, 2010, 21, 1254-1261.
2. AKTAS B., MÜLER V., TEWES M., ZEITZ J., KASIMIR-BAUER S., LOHEBERG CR., RACK B., SCHNEEWEISS A., FEHM T. Comparison of estrogen and progesterone receptor status of circulating tumor cells and the primary tumor in metastatic breast cancer patients. **Gynecol. Oncol.**, 2011, 122, 356-360.
3. ALLRED DC., HARVEY JM., BERNARDO M., CLARCK GM. Prognostic and predictive factors in breast cancer by immunohistochemical analysis. **Mod. Pathol.**, 1998, 11, 155-168.
4. BAO L., HAQUE A., JACKSON K., HAZARI S., MOROZ K., JETLY R., DASH S. Increased expression of P-glycoprotein is associated with doxorubicin chemoresistance in the metastatic 4T1 breast cancer model. **Am. J. Pathol.**, 2011, 178, 838-852.

5. BETTINI G., MORINI M., MARCATO PS. Gastrointestinal spindle cell tumours of the dog: histological and immunohistochemical study. **J. Comp. Pathol.**, 2003, 129, 283-293.
6. CAREY LA., PEROU CM., LIVASY CA., DRESSLER LG., COWAN D., CONWAY K., KARACA G., TROESTER MA., TSE CK., EDMISTON S., DEMING SL., GERADTS J., CHEANG MC., NIELSEN TO., MOORMAN PG., EARP HS., MILLIKAN RC. Race, breast cancer subtypes, and survival in the Carolina Breast Cancer Study. **J. Am. Med. Assoc.**, 2006, 295, 2492-2502.
7. CSERNI G., FRAN CZ M., KÁLMÁN E., KELEMEN G., KOMJÁTHY DC., KOVÁCS I., KULKA J., SARKADI L., UDVARHELYI N., VASS L., VÖRÖS A. Estrogen receptor negative and progesterone receptor positive breast carcinomas-how frequent are they? **Pathol. Oncol. Res.**, 2011, 17, 663-668.
8. DA SILVA BB., LOPES-COSTA PV., SANTOS AR., SOUSA-JÚNIOR EC., ALENCAR AP., PIRES CG., ROSAL MA. Comparison of three vascular endothelial markers in the evaluation of microvessel density in breast cancer. **Eur. J. Gynaecol. Oncol.**, 2009, 30, 285-288.
9. DALTON S., WHITBREAD L. Cell cycle-regulated nuclear import and export of Cdc47, a protein essential for initiation of DNA replication in budding yeast. **Proc. Natl. Acad. Sci. USA**, 1995, 92, 2514-2518.
10. FERREIRA E., GOBBI H., SARAIVA BS., CASSALI GD. Columnar cell lesions of the canine mammary gland: pathological features and immunophenotypic analysis. **BMC Cancer**, 2010, 23, 61.
11. FERREIRA LM., HOCHMAN B., JARDINI MVBA. Experimental models in research. **Acta Cir. Bras.**, 2005, 20, 28-34.
12. FOX SB., LEEK RD., BLISS J., MANSI JL., GUSTERSON B., GATTER KC, HARRIS AL. Association of tumor angiogenesis with bone marrow micrometastases in breast cancer patients. **J. Natl. Cancer Inst.**, 1997, 89, 1044-1049.
13. GIATROMANOLAKI A., KOUKOURAKIS M., O'BYRNE K., FOX S., WHITEHOUSE R., TALBOT DC., HARRIS AL., GATTER KC. Prognostic value of angiogenesis in operable non-small cell lung cancer. **J. Pathol.**, 1996, 179, 80-88.
14. GOEL AJ., MAJUMDAR SK. Antitumorogenic effects of tamoxifen, raloxifene and the combination on the development of breast tumors induced by mouse mammary carcinoma cells in balb/c-J female mice. **J. Chemother.**, 2009, 21, 426-433.
15. GOWN AM., VOGEL AM. Monoclonal antibodies to human intermediate filament proteins. II. Distribution of filament proteins in normal human tissues. **Am. J. Pathol.**, 1984, 114, 309-321.
16. HAMMOND MEH., HAYES DF., DOWSETT M., ALLRED DC., HAGERTY KL., BADVE S., FITZGIBBONS PL., FRANCIS G., GOLDSTEIN NS., HAYES M., HICKS DG., LESTER S., LOVE R., MANGU PB., MCSHANE L., MILLER K., OSBORNE CK., PAIK S., PERLMUTTER J., RHODES A., SASANO H., SCHWARTZ JN., SWEEP FC., TAUBE S., TORLAKOVIC EE., VALENSTEIN P., VIALE G., VISSCHER D., WHEELER T., WILLIAMS RB., WITTLIFF JL., WOLFF AC. American Society of Clinical Oncology/College of American Pathologists guideline recommendations for immunohistochemical testing of estrogen and progesterone receptors in breast cancer **J. Clin. Oncol.**, 2010, 28, 2784-2795.
17. HEISIG M., FRENTZEN A., BERGMANN B., GALMBACHER K., GENTSCHKEV I., HOTZ C., SCHOEN C., STRITZKER J., FENSTERLE J., RAPP UR., GOEBEL W. Specific antibody-receptor interactions trigger InLAB-independent uptake of listeria monocytogenes into tumor cell lines. **BMC Microbiol.**, 2011, 11, 1-12.
18. HEPPNER GH., MILLER FR., SHEKHAR PM. Nontransgenic models of breast cancer. **Breast Cancer Res.**, 2000, 2, 331-334.
19. HOMESLEY L., LEI M., KAWASAKI Y., SAWYER S., CHRISTENSEN T., TYE BK. Mcm10 and the MCM2-7 complex interact to initiate DNA synthesis and to release replication factors from origins. **Genes Dev.**, 2000, 14, 913-926.
20. ISRAYELYAN A., SHANNON EJ., BAGHIAN A., KEARNEY MT., KOUSOULAS KG. Thalidomide suppressed the growth of 4T1 cells into solid tumors in Balb/c mice in a combination therapy with the oncolytic fusogenic HSV-1 OncdSyn. **Cancer Chemother. Pharmacol.**, 2009, 6, 1201-1210.
21. KAUR P., NAGARAJA GM., ZHENG H., GIZACHEW D., GALUKANDE M., KRISHNAN S., ASEA A. A mouse model for triple-negative breast cancer tumor-initiating cells (TNBC-TICs) exhibits similar aggressive phenotype to the human disease. **BMC Cancer**, 2012, 12, 1-12.
22. LAKHANI SR., SCHNITT SJ., MALLEY FO., VAN DE VIJVER MJ., SIMPSON PT., PALACIOS J. Lobular Neoplasia. In: LAKHANI S R., ELLIS IO., SCHNITT SJ., TAN PH., VAN DE VIJVER MJ. **WHO Classification of Tumours of the Breast.** 4 ed. Lyon: IARC, 2012. Chapter 4; p. 78-80.
23. LORGIS V., ALGROS MP., VILLANUEVA C., CHAIGNEAU L., THIERRY-VUILLEMIN A., NGUYEN T., DEMARCHI M., BAZAN F., SAUTIERE JL., MAISONNETTE-LESCOT Y., RINGENBACH F., BONTEMPS P., PIVOT X. Discordance in early breast cancer for tumour grade, estrogen receptor, progesterone receptors and human epidermal receptor-2 status between core needle biopsy and surgical excisional primary tumour. **Breast**, 2011, 20, 284-287.
24. MAEDA K., CHUNG YS., TAKATSUKA S., OGAWA Y., ONODA N., SAWADA T., KATO Y.,

- NITTA A., ARIMOTO Y., KONDO Y. Tumour angiogenesis and tumour cell proliferation as prognostic indicators in gastric carcinoma. **Br. J. Cancer**, 1995, 72, 319-323.
25. MEHTA R., JAIN RK., SNEIGE N., BADVE S., RESETKOVA E. Expression of high-molecular-weight cytokeratin (34 β E12) is an independent predictor of disease-free survival in patients with triple-negative tumours of the breast. **J. Clin. Pathol.**, 2010, 20, 744-747.
26. NGUYEN VQ., CO C., LI JJ. Cyclin-dependent kinases prevent DNA re-replication through multiple mechanisms. **Nature**, 2001, 411, 1068-1073.
27. PALERMO-NETO J., DE OLIVEIRA MC., ROBESPIERRE SW. Effects of physical and psychological stressors on behavior, macrophage activity, and Ehrlich tumor growth. **Brain Behav. Immun.**, 2003, 17, 43-54.
28. PANJWANI P., EPARI S., KARPATE A., SHIRSAT H., RAJSEKHARAN P., BASAK R., SHET T., CHINYOY R., CHACKO R., GURSALE S., BARASKAR N., GUPTA S., HAWALDAR R., DESAI S. Assessment of HER-2/neu status in breast cancer using fluorescence in situ hybridization and immunohistochemistry: Experience of a tertiary cancer referral centre in India. **Indian J. Med. Res.**, 2010, 132, 287-294.
29. PERVEZ S., SHAIKH H., AIJAZ F., AZIZ SA., NAQVI M., HASAN SH. Immunohistochemical estrogen receptor determination in human breast carcinoma: correlation with histologic differentiation and age of the patients. **J. Pak. Med. Assoc.**, 1994, 44, 133- 136.
30. PROPHET EB., MILLS B., ARRINGTON JB., SOBIN LH: **Laboratory Methods in Histotechnology.** Armed Forces Institute of Pathology: Washington DC, 1992.
31. PULASKI BA., OSTRAND-ROSENBERG S. Reduction of established spontaneous mammary carcinoma metastases following immunotherapy with major histocompatibility complex class II and B7.1 cell-based tumor vaccines. **Cancer Res.**, 1998, 7, 1486-1493.
32. ROSEN PP. Invasive ductal carcinoma: assessment of prognosis, morphologic prognostic markers and tumor growth rate. In: _____ **Rosen's Breast Pathology.** 3 ed. Philadelphia: Lippincott Williams & Wilkins, 2009, Chapter: p.358-404.
33. RUNGSIPIPAT A., TATEYAMA S., YAMAGUCHI R., UCHIDA K., MURAKAMI Y., MIYOSHI N, HAYASHI T. Amplification of the c-yes oncogene in canine mammary tumors. **J. Vet. Med. Sci.**, 1999, 61, 185-189.
34. SLAMON DJ., CLARK GM., WONG SG., LEVIN WJ., ULLRICH A., MCGUIRE WL. Human breast cancer: correlation of relapse and survival with amplification of the HER-2/neu oncogene. **Science**, 1987, 235, 177-182.
35. SORLIE T., PEROU CM., TIBSHIRANI R., AAS T., GEISLER S., JOHNSEN H., HASTIE T., EISEN MB., VAN DE RIJN M., JEFFREY SS., THORSEN T., QUIST H., MATESE JC., BROWN PO., BOTSTEIN D., LØNNING PE., BØRRESEN-DALE AL. Gene expression patterns of breast carcinomas distinguish tumor subclasses with clinical implications. **Proc. Natl. Acad. Sci. USA**, 2001, 98, 10869-10874.
36. SOUZA CM., FERREIRA E., DINIZ MAN., ANDRADE SP., SANTOS IC., PESQUERO JL., CASSALI GD. Kint3-4 protein from human plasminogen delays Ehrlich tumor growth in mice. **J. Bras. Patol. Med. Lab.**, 2011, 47, 465-472.
37. SOUZA CM., CARVALHO LF., VIEIRA TS., SILVA ACA., LOPES MTP., FERREIRA MAND., ANDRADE SP., CASSALI GD. Thalidomide attenuates mammary cancer associated-inflammation, angiogenesis and tumor growth in mice. **Biomed & Pharmacother.**, 2012, 66, 491-498.
38. SPYRATOS F., FERRERO-POÛS M., TRASSARD M., HACÈNE K., PHILLIPS E., TUBIANA-HULIN M., LE DOUSSAL V. Correlation Between MIB-1 and other proliferation markers: clinical implications of the MIB-1 cutoff value. **Cancer**, 2001, 94, 2151-2159.
39. TAKEBAYASHI Y., AKLYAMA S., YAMADA K., AKIBA S., AIKOU T. Angiogenesis as an unfavorable prognostic factor in human colorectal carcinoma. **Cancer**, 1996, 78, 226-231.
40. UMEMURA S., KUROSUMI M., MORIYA T., OYAMA T., ARIHIRO K., YAMASHITA H., UMEKITA Y., KOMOIKE Y., SHIMIZU C., FUKUSHIMA H., KAJIWARA H., AKIYAMA F. Immunohistochemical evaluation for hormone receptors in breast cancer: a practically useful evaluation system and handling protocol. **Breast Cancer**, 2006, 13, 232-235.
41. VAN DE RIJN M., PEROU CM., TIBSHIRANI R., HAAS P., KALLIONIEMI O., KONONEN J., TORHORST J., SAUTER G., ZUBER M., KÖCHLI OR., MROSS F., DIETERICH H., SEITZ R., ROSS D., BOTSTEIN D., BROWN P. Expression of cytokeratins 17 and 5 identifies a group of breast carcinomas with poor clinical outcome. **Am. J. Pathol.**, 2002, 161, 1991-1996.
42. WOLFF AC., HAMMOND ME., SCHWARTZ JN., HAGERTY KL., ALLRED DC., COTE RJ., DOWSETT M., FITZGIBBONS PL., HANNA WM., LANGER A., MCSHANE LM., PAIK S., PEGRAM MD., PEREZ EA., PRESS MF., RHODES A., STURGEON C., TAUBE SE., TUBBS R., VANCE GH., VAN DE VIJVER M., WHEELER TM., HAYES DF. .American Society of Clinical Oncology/College of American Pathologists Guideline

Recommendations for Human Epidermal Growth Factor Receptor 2 Testing in Breast Cancer. **J. Clin. Oncol.**, 2007, 25, 118-145.

43. XANTHOPOULOS JM., ROMANO AE., MAJUMDAR SK.. Response of Mouse Breast Cancer Cells to Anastrozole, Tamoxifen, and the Combination. **J. Biomed. Biotechnol.**, 2005, 1, 10-19.