



## Case Report

# Fatal and disseminated infection by *Entamoeba invadens* in a red-footed tortoise (*Chelonoidis carbonaria*)

Juliana Keiko Lourical Firmo Nishihara<sup>1</sup>, Eduardo Ferreira-Machado<sup>\*1,2</sup>, Pedro Enrique Navas-Suarez<sup>2</sup>, Ticiania Brasil Ervedosa<sup>2</sup>, Jamile Macedo Garcia<sup>1,2</sup>, Isis Paixão de Jesus<sup>2</sup>, Julia de Carvalho<sup>2</sup>, Ketlyn Bolsachini Figueiredo<sup>2</sup>, Ana Carolina Souza Ramos de Carvalho<sup>2</sup>, Mayra Frediani<sup>3</sup>, Natália Coelho Couto de Azevedo Fernandes<sup>1,2</sup>, Juliana Mariotti Guerra<sup>1,2</sup>

<sup>1</sup>Departamento de Patologia, Faculdade de Medicina Veterinária e Zootecnia, Universidade de São Paulo.

Av. Prof. Orlando Marques de Paiva, 87, Butantã, São Paulo, SP, 05508-270, Brazil.

<sup>2</sup>Centro de Patologia, Instituto Adolfo Lutz, São Paulo, SP, Brazil.

<sup>3</sup>Centro de Manejo e Conservação de Animais Silvestres, Divisão da Fauna Silvestre, Secretaria Municipal do Verde e do Meio Ambiente, São Paulo, SP, Brazil

**\*Corresponding author:** [eduardo.ferreira.machado@usp.br](mailto:eduardo.ferreira.machado@usp.br)

Submitted: January 25<sup>th</sup>, 2023. Accepted: April 3<sup>rd</sup>, 2023.

## Abstract

Amebiasis is an important parasitosis that can affect reptiles, specially caused by protozoas of the genus *Entamoeba*, which include pathogenic or commensal species. *Entamoeba invadens* is the most common amoeba to cause serious disease and death in reptiles. This paper aims to report a case of a sudden death due to a disseminated infection by *Entamoeba invadens* in a red-footed tortoise (*Chelonoidis carbonaria*). The animal was brought to the Center for Management and Conservation of Wild Animals of the Fauna Division and found dead after being kept in an enclosure with other captive tortoises for 11 months. Macroscopic findings evidenced necrotizing typhlitis and proctitis and round yellow areas in the right lobe of liver parenchyma. In the histological examination, necrotizing and heterophilic enteritis and necrotizing hepatitis with macrovesicular degeneration of hepatocytes, associated with mixed inflammatory infiltrate were present. Both organs revealed numerous amoebic trophozoites, morphologically suggestive of the genus *Entamoeba*, and bacterial colonies. The agent was confirmed by PCR and Sanger DNA sequencing, which leads this study to be the first confirmed case report of *E. invadens* infection in Brazil in a red-footed tortoise.

**Keywords:** protozoan, amebiasis, trophozoites, reptile, tortoise, hepatitis, enteritis.

## Introduction

Parasitic and amphizoic amoebae can cause serious diseases in a huge variety of hosts worldwide. Those frequently reported in humans and animals include the *Entamoeba* complex, *Acanthamoeba* spp., *Balamuthia mandrillaris*, *Naegleria fowleri* and *Sapinia* spp. (17, 35, 36). The genus *Entamoeba* comprises endocommensal or endoparasite species, with *Entamoeba histolytica* being the most important one, due to the association with intestinal and extraintestinal infections in humans (15). *Entamoeba dispar*, *E. moshkovskii*, *E. hartmanni*, *E. coli*, *E. polecki*, *Endolimax nana* or *Iodamoeba buetschlii* are also very frequent, but they are usually considered non-pathogenic (33).

In veterinary medicine, two other pathogenic species, highly related to *E. histolytica*, have been reported. *Entamoeba nuttalli* has been detected in captive and free-living non-human primates, including macaques, guenon, baboon, colobus, and chimpanzee in zoos (18, 38, 39, 40, 41, 42). *E. invadens* can be responsible for severe disease and death, specially for lizards and snakes, as *Varanus varius* (30), *V. salvator* (31, 6), *V. komodoensis*, *Tiliqua scincoides* (8, 31), *Python molurus bivittatus*, *Boa constrictor* (8), and *Eunectes murinus* (27). Chelonians and crocodilians are usually symptomless carriers and reservoir for this pathogen (2, 9, 22). However, symptomatic cases due to *E. invadens* (12) and *Entamoeba* sp. (26, 28, 20) infections in chelonians have already been reported.

In Brazil, amebiasis was described in a red-footed tortoise (*Chelonoidis carbonaria*; Spix 1824), but the species of the protozoan had not been determined (29). Therefore, this present report describes, for the first time to the best of our knowledge, a fatal and disseminated infection by *Entamoeba invadens* in a *Chelonoidis carbonaria*.

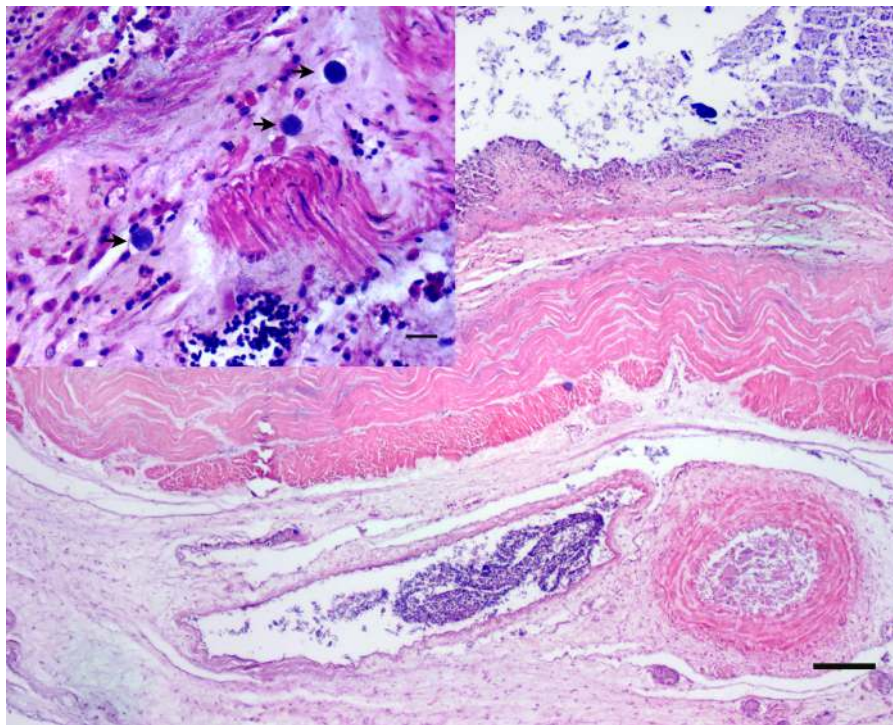
## Case Description

A red-footed tortoise (*Chelonoidis carbonaria*) was brought to the Center for Management and Conservation of Wild Animals of the Fauna Division (CeMaCAS) of the Municipality of São Paulo, on June, 2021. At clinical examination, the tortoise was in a good nutritional status, hydrated and had normocolored mucosas. The complete blood count (CBC) revealed mild anisocytosis by polychromasia and microcytosis and mild monocytosis (427 cells/mm<sup>3</sup>, reference interval 0-376 cells/mm<sup>2</sup>) (5). No treatment was carried out. The animal was kept in an enclosure with other tortoises in the Rehabilitation Center for 11 months, when it was suddenly found dead. The cadaver was refrigerated and referred to necropsy one day later.

At the post-mortem external examination, the tortoise had 3,330 Kg, with regular body condition and mild nasal and oral liquid brown contents. The animal was hydrated. There was a discrete amount of adipose tissue and

serosanguineous liquid in celomatic cavity. The liver was slightly decreased and revealed a round yellow area of 2 cm in diameter, in the right lobe parenchyma. The middle lobe had a firmer consistency and light brown color. The intestines revealed a dark red mucosa, extensive necrotizing typhlitis and proctitis with helminths in its lumen. Other identified alterations were a red lung with moderate amount of brown content at cut and a bladder full of foul odor eritrocromic cloudy urine and red mucosa. The remaining organs had no macroscopic alterations. Coproparasitological exam showed several *Nyctotherus* cysts.

Samples of liver, intestine, kidneys, lung, bladder and heart were collected, fixed in 10% buffered formalin, routinely processed for histopathologic evaluation and visualized with hematoxylin and eosin (HE), Periodic Acid-Schiff (PAS) and Brown Brenn stains. In intestines, the histological analysis exhibited a transmural enteritis with extensively necrosis of the mucosa associated to discrete infiltrate of heterophils, lymphocytes and plasm cells, distributed multifocal to coalescent of all the layers of the organ and an extensive edema of the submucosa and serosa (Fig. 1). In the liver, large and multifocal to coalescent areas of coagulative necrosis associated with thrombotic events were observed, in addition, moderate heterophilic infiltrate in the interface of necrotizing areas and viable parenchyma was present. In the rest of viable parenchyma diffuse severe mixed inflammatory infiltrate, macrovesicular degeneration and multifocal



**Figure 1.** Major: Intestine, HE, 4X. Transmural diffuse enteritis, in the left superior of photography there is necrosis and detachment of mucosa, in the posterior middle of photograph extensive edema of serosa. Scale bar 100  $\mu$ m. Inset: Intestine, HE, 40X. Basophilic round structures of *Entamoeba*-like (arrows) in submucosa. Scale bar 10  $\mu$ m.

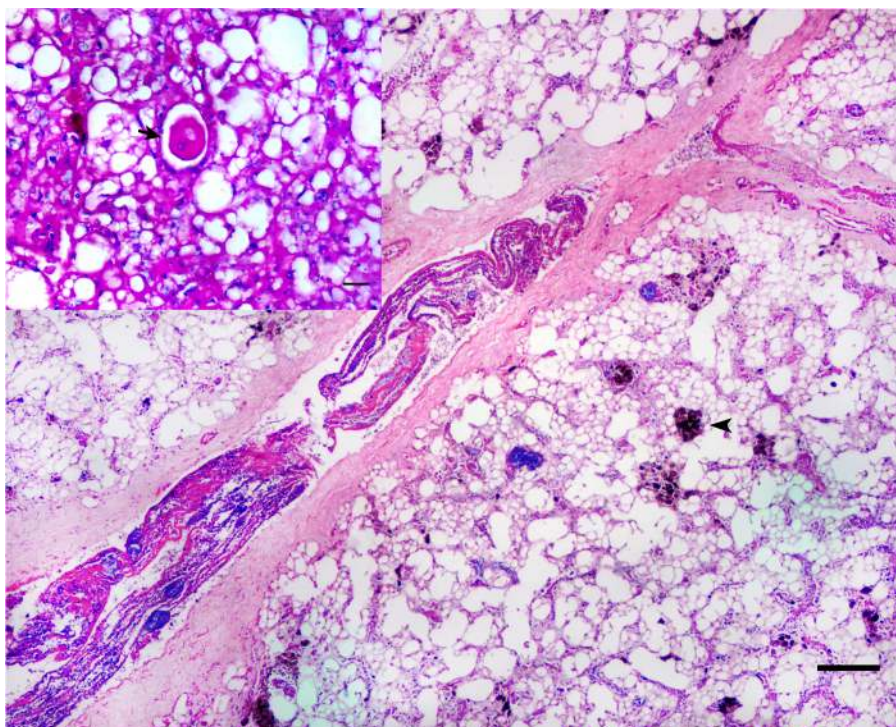
moderate hyperplasia of pigmented macrophages were noted/observed (Fig. 2). There were approximately 10-20  $\mu\text{m}$  diameter round structures with granulated to vacuolated basophilic cytoplasm, encompassed by a thick eosinophilic wall and a 5-7  $\mu\text{m}$ , round to ovoid and centrally to eccentrically located nucleus containing marginated chromatin, and a slightly basophilic karyosome, positive for PAS stain, in adjacent parenchyma, in both intestine and liver (Figs. 1 and 2 insets). These morphological characteristics were in accordance with the genus *Entamoeba*. Also, gram-negative coccobacilli bacterial myriads were noted in mucosal and submucosal layers in the intestine, inside the parenchyma and blood vessels of liver, heart, kidney and lungs fragments, associated with thrombotic events. Lung and heart fragments showed multiple gram-negative coccobacilli colonies.

DNA from a fragment of fresh frozen liver was extracted with Wizard<sup>®</sup> Genomic DNA Purification Kit (Promega, Madison, EUA) following the manufacturer's protocol. For amplification, a PCR protocol was performed with primers for the conservative part of SSU rRNA gene specific for the *Entamoeba* genus (Entam1 5'-GTTGATCCTGCCAGTATTATATG-3' and Entam2 5'-CACTATTGGAGCTGGAATTAC-3') (43). PCR conditions were ten minutes at 95°C, 40 cycles of one minute at 95°C, 60°C and 72°C, and final elongation for 10 minutes at 72°C in a Veriti<sup>™</sup> 96-Well Fast Thermal Cycler (ThermoFisher Scientific, Waltham, MA, USA). The PCR

product were analyzed by agarose gel electrophoresis on a 2% gel and purified with QIAquick PCR Purification Kit (QIAGEN GmbH, Antwerp, Belgium). The Sanger sequencing was carried out using BigDye Terminator v3.1 cycle sequencing kit (Applied Biosystems, Carlsbad, CA, USA) and electrophoresed in a the ABI 3500 Genetic Analyzer sequencer (ThermoFisher Scientific, Waltham, MA, USA). BioEdit version 7.2.5 software were applied for analysis and edition. The Basic Local Alignment Search Tool (BLASTn; NCBI <https://www.ncbi.nlm.nih.gov/>) was used to verify similarity with *Entamoeba* species. The 407 base pair-sequence were deposited in GenBank under accession number OQ255881 and showed 100% of nucleotide similarity with *Entamoeba invadens* (Accession number AY769863.1) isolate from Arakan turtles in 2004, USA. The study was and registered in the National System of Genetic Patrimony Management and Associated Traditional Knowledge (Ministry of Environment, Federal Government, Brazil) - SISGEN (#A3336BC).

## Discussion

*Entamoeba invadens* is the most common pathogenic amoeboid protozoan in reptiles, specially for snakes and lizards (25). Chelonians and crocodylians are usually symptomless carriers and consider reservoirs of this pathogen (14).



**Figure 2.** Major: Liver, HE, 4X. Diffuse severe macrovesicular hepatocyte degeneration, bacterial colonies and hyperplasia of pigmented macrophages (arrowhead), associated with mixed inflammation. Scale bar 100  $\mu\text{m}$ . Inset: Liver, PAS, 40X. Round Structure *Entamoeba* like (arrow) in the parenchyma. Note the vacuolated cytoplasm and the centrally to eccentrically located round nucleus. Scale bar 10  $\mu\text{m}$ .

This is the first report of systemic infection due to *Entamoeba invadens* in a red-footed tortoise (*Chelonoidis carbonaria*) in Brazil.

*E. invadens* can act as either a gastrointestinal commensal or a pathogen, with a direct life cycle. The transmission occurs by oral-fecal via, when cysts are ingested directly from feces or from a contaminated environment. Excystation occurs within the host intestine releasing the motile trophozoites, which replicate and can either remain within the intestinal lumen feeding on ingesta (20, 44). Amoebiasis is usually associated to ulcerative lesions in gastrointestinal tract, including stomach, small intestine and colon (6, 16). Invasion can result in embolization of trophozoites to the liver via the portal vein through hematogenous or lymphatic dissemination or ascending the common bile duct to the gallbladder, reaching the adjacent hepatic tissue (14). Widespread dissemination to distant sites as lung, spleen, kidney, and brain (4, 11, 16, 27). Also, a case of necrotizing and granulomatous myositis due to *Entamoeba invadens* had already been described in a common water monitor lizard (*Varanus salvator*) (6). In this case, enteritis and hepatitis were associated with the trophozoites.

The most common presenting complaints in reptiles with amebiasis are decreased appetite progressing to anorexia, regurgitation, dehydration, weight loss and diarrhea, although some individuals present dead or acutely moribund (1, 3, 4, 6, 7, 9, 16, 19, 20, 26, 27). The only clinical sign noticed in this case was weight loss, however other symptoms may not have been identified since this animal lived in an enclosure with other tortoises. *E. invadens* is highly contagious and has caused outbreaks in juvenile (19) and wild-caught chelonians (26), and in captive pythons (16). Pathogenicity is dependent on differences in strain virulence, environmental and host temperature (10, 23, 32, 45) and host conditions, since young, old, immunocompromised, or otherwise debilitated individuals (such as following capture and/or transport) of any reptilian species can develop clinical disease (44). Probably the animal described here could have been immunosuppressed or under stress factors (21). Other tortoises in the same enclosure that died were tested for *E. invadens* by PCR and were negative.

Hematologic findings observed in this case revealed monocytosis, indicating a inflammatory diseases and/or chronic stress in chelonians (28, 37, 46). Hematologic and biochemical abnormalities associated with *E. invadens* are poorly characterized. Reports in a green iguana, in bearded dragon (*Pogona vitticeps*) and in leopard leopard tortoises (*Stigmochelys pardalis*) documented decreased packed cell volume (PCV) with evidence of regeneration, moderate leukocytosis due to heterophilia, monocytosis and lymphopenia, with toxic change and a left shift and mild increase in AST (24, 34).

In affected reptiles, the most commonly necropsy findings included multifocal to coalescing gastrointestinal ulcers, sometimes with concurrent mucosal pseudomembrane

formation, edema and hepatomegaly (1, 4, 6, 11, 16, 19, 23, 24, 26, 27). Multiple irregular yellow foci in multiple tissues could be seen in systemic infections (6). Trophozoites can be identified in histologic sections of affected tissues, and are highlighted by PAS (27) and silver stains (1, 16). Other histologic findings include necrosis and hemorrhage with mixed inflammation including heterophils, lymphocytes, macrophages, and eosinophils (1, 16, 26). In the present case, we detected histopathologic lesions that are similar to the reported ones. Direct microscopic examination of saline faecal smear and culture from fresh feces using Robinson's medium could be applied for diagnosis, however, false negatives are possible as animals can shed intermittently or have low burden infections (10, 27, 41). PCR and DNA sequencing are sensitive and specific techniques for identifying *E. invadens* in feces (2) and tissues (6, 27). In this case, the molecular examination provide the species of *Entamoeba* involved. It is important to highlight the value of these tests for the definitive diagnosis of *E. invadens*, as only a few reports described the molecular confirmation of this agent, which can be highly pathogenic in reptiles (6, 13, 27, 44). They are relevant tools to corroborate with the epidemiology of *Entamoeba* species.

Treatment for amoebiasis is often ineffective and very difficult (10, 20, 26). Therefore, care to avoid potential exposure by limiting mixed-housing of different reptilian species, especially of chelonians with snakes and lizards, is highly recommended, since amebiasis could be a severe infectious disease for tortoises under adverse environmental conditions.

## Acknowledgements

The authors would like to thank the support of Conselho Nacional de Desenvolvimento Científico e Tecnológico (CNPq) (#404510/2021), Grupo de Apoio às Políticas de Prevenção e Proteção à Saúde/Fundo Especial de Saúde para Imunização em Massa e Controle de Doenças (GAPS/FESIMA # 040/2019 and # 28/2020) and PDIP - São Paulo Research Foundation (FAPESP) (grant# 2017/50333-7).

## Conflict of Interest

The authors declare no competing interests.

## References

1. Baseler LJ, Visvesvara GS, Ramos-Vara JA. Pathology in practice. *E. invadens* infection in a ball python. J Am Vet Med Assoc. 2014;245(5):501-3.
2. Bradford CM, Denver MC, Cranfield MR. Development of a polymerase chain reaction test for *Entamoeba invadens*. J Zoo Wildl Med. 2008;39(2):201-7.

3. Brewer LA, Denver MC, Whitney M, Eichinger DJ. Analysis of commercial *Entamoeba histolytica* ELISA kits for the detection of *Entamoeba invadens* in reptiles. *J Zoo Wildl Med*. 2008;39(3):493-5.
4. Bonner B, Denver M, Gamer M, Innis C, Nathan R. *Entamoeba invadens*. *J Herpetol Med Surg*. 2001;11(3):17-22.
5. Carvalho da Silva Bergamini, B. Variação sazonal dos parâmetros hematológicos e bioquímicos do jabuti piranga (*Chelonoidis carbonaria*) [Seasonal variation of hematological and biochemical parameters of the red footed tortoise (*Chelonoidis carbonaria*)] [Master's thesis]. [Botucatu (SP)]. Sao Paulo State University; 2016. 140 p.
6. Chia MY, Jeng CR, Hsiao SH, Lee AH, Chen CY, Pang VF. *Entamoeba invadens* myositis in a common water monitor lizard (*Varanus salvator*). *Vet Pathol*. 2009;46(4):673-6.
7. Denver, MC. Reptile protozoa. In: Fowler ME, Miller RE, editors. *Zoo and wild animal medicine*. Missouri: WB Saunders; 2008. p. 154-9.
8. Donaldson M, Heyneman D, Dempster R, Garcia L. Epizootic of fatal amebiasis among exhibited snakes: epidemiologic, pathologic, and chemotherapeutic considerations. *Am J Vet Res*. 1975;36(6):807-17.
9. Doneley B, Monks D, Johnson R, Carmel B. *Reptile Medicine and Surgery in Clinical Practice*. Hoboken: John Wiley & Sons; 2018. 500 p.
10. García G, Ramos F, Pérez RG, Yañez J, Estrada MS, Mendoza LH, Martínez-Hernández F, Gaytán P. Molecular epidemiology and genetic diversity of *Entamoeba* species in a chelonian collection. *J Med Microbiol*. 2014;63(Pt 2):271-83.
11. Gardhouse S, Eshar D, Biller DS, Schumacher L, Almes K. Diagnostic challenge. *J Exot Pet Med*. 2015;24(2):249-53.
12. George RH, Jones B 3rd, Musick JA. Enterohepatitis due to *Entamoeba invadens* in captive *Caretta caretta*. In: Richardson TH, Richardson JI, Donnelly, M, editors. *Proceedings of the Tenth Annual Workshop on Sea Turtle Biology and Conservation*; 1990 Feb 20-24; Hilton Head Island, SC. Miami (FL): National Marine Fisheries Service Technical Memorandum, NOAA-TM-NMFS-SEFSC-278; c1990. p. 93-4.
13. Hollamby S, Murphy D, Schiller CA. An epizootic of amoebiasis in a mixed species collection of juvenile tortoises. *J Herpetol Med Surg*. 2000;10(1):9-15.
14. Jacobson ER, Greiner E. Amebiasis in red-footed tortoises. *J Am Vet Med Assoc*. 1983;183(11):1192-4.
15. Kantor M, Abrantes A, Estevez A, Schiller A, Torrent J, Gascon J, Hernandez R, Ochner C. *Entamoeba histolytica*: updates in clinical manifestation, pathogenesis, and vaccine development. *Can J Gastroenterol Hepatol*. 2018;2018:4601420.
16. Kojimoto A, Uchida K, Horii Y, Okumura S, Yamaguchi R, Tateyama S. Amebiasis in four ball pythons, *Python reginus*. *J Vet Med Sci*. 2001;63(12):1365-8.
17. Krol-Turminska K, Olender A. Human infections caused by free-living amoebae. *Ann Agric Environ Med*. 2017;24(2):254-60.
18. Levecke B, Dreesen L, Dorny P, Verweij JJ, Vercammen F, Casaert S, Vercruyse J, Geldhof P. Molecular identification of *Entamoeba* spp. in captive nonhuman primates. *J Clin Microbiol*. 2010;48(8):2988-90.
19. MacNeill AL, Uhl EW, Kolenda-Roberts H, Jacobson E. Mortality in a wood turtle (*Clemmys insculpta*) collection. *Vet Clin Pathol*. 2002;31(3):133-6.
20. McFarland A, Conley KJ, Seimon TA, Sykes JM. A retrospective analysis of amoebiasis in reptiles in a zoological institution. *J Zoo Wildl Med*. 2021;52(1):232-40.
21. Martinez Silvestre A. How to assess stress in reptiles. *J Exot Pet Med*. 2014;23(3):240-3.
22. Meerovitch E. A new host of *Entamoeba invadens* Rodhain, 1934. *Can J Zool*. 1958;36(3):423-7.
23. Meerovitch E. Infectivity and pathogenicity of polyxenic and monoxenic *Entamoeba invadens* to snakes kept at normal and high temperatures and the natural history of reptile amoebiasis. *J Parasitol*. 1961;47(5):791-4.
24. Nikousefat Z, Javdani M, Hashemnia M, Rezaei F, Chalechale A. Hematology of a green iguana infected by *Entamoeba invadense*. *Online J Vet Res*. 2014;18(11):851-8.
25. O'Rourke DP, Schumacher J. *Laboratory animal medicine*. 2nd ed. [place unknown]: Academic Press; c2002. Biology and diseases of reptiles; p. 827-60.
26. Ozaki K, Matsuo K, Tanaka O, Narama I. Amoebosis in the flat-shelled spider tortoise (*Acinixys planicauda*). *J Comp Pathol*. 2000;123(4):299-301.
27. Park CH, Han JB, Park SI. Dual infection with *Entamoeba invadens* and *Aeromonas hydrophila* in a captive anaconda (*Eunectes murinus*) leading to necrotising gastroenteritis and hepatocyte death. *Vet Med (Praha)*. 2019;64(3).
28. Philbey AW. Amoebic enterocolitis and acute myonecrosis in leopard tortoises (*Geochelone pardalis*). *Vet Rec*. 2006;158(16):567-9.
29. Ferreira de Souto EP, Moreira Campos E, Medeiros Miranda SM, Medeiros Pereira KD, Sena Lima CD, de Souza JG, Nogueira de Galiza GJ, Medeiros Dantas AF. Amebiasis in a backyard red-foot tortoise (*Chelonoidis carbonaria*). *Acta Sci Vet*. 2020;48(1): 100611.
30. Ratcliffe HL, Geiman QM. Amebiasis in reptiles. *Science*. 1934;79(2049):324-5.
31. Ratcliffe HL, Geiman QM. Spontaneous and experimental amebic infection in reptiles. *Arch Pathol*. 1938;25:160-4.
32. Rios FM, Zimmerman LM. *Immunology of Reptiles*. eLS. 2015;doi:10.1002/9780470015902.a0026260.
33. Sard BG, Navarro RT, Esteban Sanchis JG. Amebiasis intestinales no patógenas: una visión clínicoanalítica [Non-pathogenic intestinal amoebae: a clinical-analytical vision]. *Enferm Infecc Microbiol*. 2011;29(Suppl 3):20-8.

34. Schwartz D, Ali I, Roy S, Pohlman L, Kastl B, Eshar D. *Entamoeba* sp. infection in a bearded dragon (*Pogona vitticeps*). *Vet Glas*. 2020;74(1):77-84.
35. Schuster FL, Visvesvara GS. Free-living amoebae as opportunistic and non-opportunistic pathogens of humans and animals. *Int J Parasitol*. 2004;34(9):1001-27.
36. Shirley DT, Farr L, Watanabe K, Moonah S. A Review of the global burden, new diagnostics, and current therapeutics for amebiasis. *Open Forum Infect Dis*. 2018;5(7):ofy161.
37. Suarez-Yana T, David Montes I, Zuñiga R, Mangel JC, Alfaro-Shigueto J. Hematologic, morphometric, and biochemical analytes of clinically healthy green sea turtles (*Chelonia mydas*) in Peru. *Chelonian Conserv Biol*. 2016;15(1):153-7.
38. Suzuki J, Kobayashi S, Murata R, Tajima H, Hashizaki F, Yanagawa Y, Takeuchi T. A survey of amoebic infections and differentiation of an *Entamoeba histolytica*-like variant (JSK2004) in nonhuman primates by a multiplex polymerase chain reaction. *J Zoo Wildl Med*. 2008;39(3):370-9.
39. Suzuki J, Kobayashi S, Murata R, Yanagawa Y, Takeuchi T. Profiles of a pathogenic *Entamoeba histolytica*-like variant with variations in the nucleotide sequence of the small subunit ribosomal RNA isolated from a primate (De Brazza's guenon). *J Zoo Wildl Med*. 2007;38(3):471-4.
40. Tachibana H, Yanagi T, Akatsuka A, Kobayashi S, Kanbara H, Tsutsumi V. Isolation and characterization of a potentially virulent species *Entamoeba nuttalli* from captive Japanese macaques. *Parasitology*. 2009;136(10):1169-77.
41. Tachibana H, Yanagi T, Feng M, Bandara KB, Kobayashi S, Cheng X, Hirayama K, Rajapakse RP. Isolation and molecular characterization of *Entamoeba nuttalli* strains showing novel isoenzyme patterns from wild toque macaques in Sri Lanka. *J Eukaryot Microbiol*. 2016;63(2):171-80.
42. Takano JI, Narita T, Tachibana H, Terao K, Fujimoto K. Comparison of *Entamoeba histolytica* DNA isolated from a cynomolgus monkey with human isolates. *Parasitol Res*. 2007;101(3):539-46.
43. Verweij JJ, Polderman AM, Clark CG. Genetic variation among human isolates of uninucleated cyst-producing *Entamoeba* species. *J Clin Microbiol*. 2001;39(4):1644-6.
44. Walden, HDS, Greiner EC, Jacobson ER. Parasites and parasitic diseases of reptile. In: Jacobson ER, editor. *Infectious diseases and pathology of reptiles*. Florida: CRC Press; 2020. p. 859-968.
45. Wright RK, Cooper EL. Temperature effects on ectotherm immune responses. *Dev Comp Immunol*. 1981;5(Suppl 1):117-22.
46. Zhang F, Gu H, Li P. A review of chelonian hematology. *Asian Herpetol Res*. 2011;2(1):12-20.