



**Diagnostic exercise From The Latin Comparative Pathology Group and the Davis-Thompson Foundation:**

**Presumptive red maple leaf toxicosis in a horse**

Kang D<sup>1</sup>, Neto R<sup>2</sup>, Henker L<sup>2</sup>, Lunardon T<sup>2</sup>

<sup>1</sup>The Ohio State University, College of Veterinary Medicine, Columbus, OH 43210, USA

<sup>2</sup>Auburn University College of Veterinary Medicine Department of Pathobiology, 130 Wire Road Auburn, AL 36849, USA

\*Corresponding author: kang.930@osu.edu

**Clinical History:** A 16-year-old Quarter Horse gelding was presented for a 3-day history of lethargy, marked anemia, cyanotic oral mucous membrane, delayed jugular refill, and dark red urine, which retained the discoloration after centrifugation. Relevant in-house laboratory findings included packed cell volume of 15.3% [reference interval (RI): 32.0-48.0], elevated mean corpuscular hemoglobin concentration (MCHC) (61.1 g/dL; RI: 31.0-37.0), and a high hemolysis index (1642; RI: 0-43). Blood smears revealed moderate amounts of ghost cells (Fig 1, arrows) and eccentrocytes (Fig 1, arrowheads) within a highly hemolytic background.

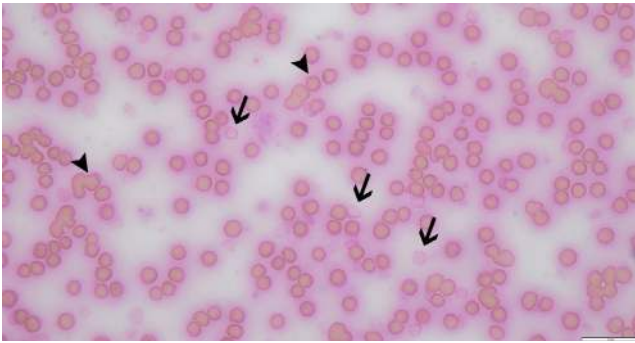
**Necropsy Findings:** Both kidneys had uniformly dark red cortex and medulla. The urinary bladder contained moderate amounts of dark red, thin, urine (Fig.2). Scattered throughout most of the liver parenchyma were large numbers of up to 1.5-cm diameter eosinophilic granulomas with a mineralized core (most likely parasitic granulomas, deemed incidental). Other organs were unremarkable.

**Gross and Microscopic Images:**

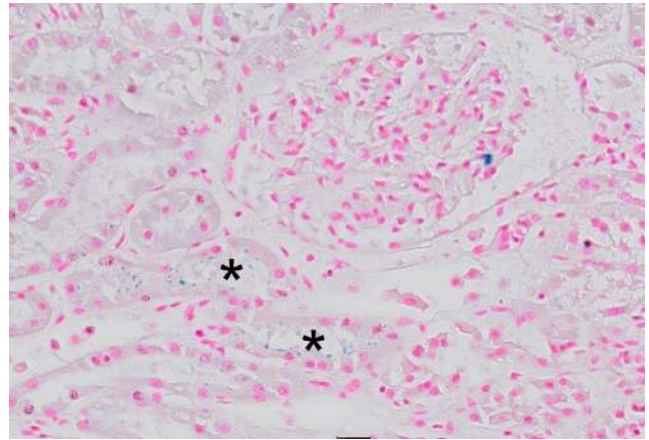
**Follow-up questions:**

- *Histological description*
- *Histologic diagnosis*
- *Most likely etiology*

	<p><i>*The Diagnostic Exercises are an initiative of the Latin Comparative Pathology Group (LCPG), the Latin American subdivision of The Davis-Thompson Foundation (DTF). These exercises are contributed by members and non-members from any country of residence. Consider submitting an exercise! A final document containing this material with answers and a brief discussion will be posted on the DTF website (<a href="https://davisthompsonfoundation.org/diagnostic-exercise/">https://davisthompsonfoundation.org/diagnostic-exercise/</a>).</i></p> <p><b>Editor-in-chief:</b> Claudio Barros <b>Associate Editor for this Diagnostic Exercise:</b> Saulo Pavarini</p>	
--	----------------------------------------------------------------------------------------------------------------------------------------------------------------------------------------------------------------------------------------------------------------------------------------------------------------------------------------------------------------------------------------------------------------------------------------------------------------------------------------------------------------------------------------------------------------------------------------------------------------------------------------------------------------------------------------	--



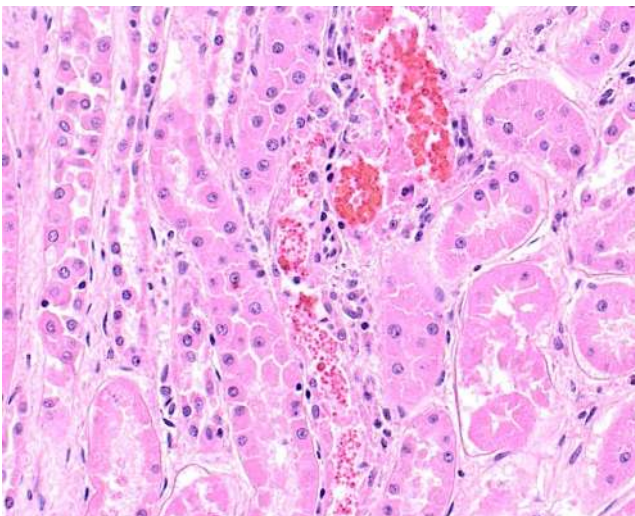
**Figure 1.** Blood smear cytology with some ghost cells (arrows) and eccentrocytes (arrowheads) in a highly hemolytic background.



**Figure 4.** Prussian blue stain of kidney revealing small amounts of blue granules along the apical border of some tubular epithelial cells (asterisk), indicating iron from catabolized hemoglobin.



**Figure 2.** A transverse section of dark red kidney and hemoglobinuria.



**Figure 3.** Renal tubules with hemoglobin casts and some necrotic lining epithelial cells.

#### Answers

**Histological Description:** Kidney, a moderate number of cortical tubules are variably dilated, lined by attenuated epithelial cells, and filled with moderate amounts of globular to granular, bright red material (hemoglobin casts). Some tubular epithelial cells are shrunken with bright eosinophilic cytoplasm, and a pyknotic or karyolytic nucleus (necrosis). Multifocally, tubular epithelial cells contain a small amount of golden to brown cytoplasmic pigment that is highlighted with Prussian blue (consistent with iron). Similar pigment also lines the apical border of the lining epithelium.

**Morphologic Diagnosis:** Kidney (cortical tubules): Epithelial necrosis with luminal hemoglobin casts, multifocal, moderate

**Most likely etiology:** Red maple leaf toxicosis

**Comments:** Red maple (*Acer rubrum*) is native to eastern United States and the intoxication is a seasonal disorder that commonly occurs during the summer and fall seasons (7,9). When the horse ingests dried or wet/wilted red maple leaves, oxidative damage to erythrocyte cell membranes and hemoglobin ensues, which will result in hemolytic anemia, methemoglobinemia, and formation of Heinz bodies and eccentrocytes(7). The toxin is still unknown but thought to be gallotannins and gallic acid that can be converted to pyrogallol in the equine gastrointestinal tract. Doses of 1.5 g/kg of dried maple leaves can be toxic for smaller equids (1,7).

Clinical signs of red maple toxicosis (RMT), which primarily affects equids, can be either from the peracute form in late fall or the hemolytic form in early fall (4-6). Horses with mild cases may not show any clinical signs or only mild nonspecific signs, including depression,

lethargy, and inappetence. Other more common signs include pale mucous membranes, icterus, colic, urine discoloration (red or brown “chocolate”), tachycardia, tachypnea, dyspnea, fever, weakness, depression, and ataxia (2,7). Rarely, sudden death and pregnant mare abortion have also been reported with RMT.

RMT can be presumptively diagnosed based on clinicopathologic evidence of intravascular or extravascular hemolytic anemia, methemoglobinemia, and Heinz body and/or eccentrocytes formation. Intravascular and extravascular hemolysis is due to the oxidative denaturation and aggregation of hemoglobin which results in Heinz body formation. Methemoglobin is due to the oxidation of hemoglobin iron, which becomes incapable of carrying oxygen to the body (8). Chemical panels may show changes due to dehydration and renal damage, including an increase in total protein, albumin, blood urea nitrogen (BUN), and creatinine. Enzymes such as aspartate aminotransferase (AST) and creatinine kinase (CK) may also be elevated (7). Grossly, splenomegaly, renal edema, and icterus can be found in RMT horses. Microscopically, the kidneys typically have pigmentary tubular nephrosis (renal tubular necrosis with hemoglobin casts). The spleen can have erythrophagocytosis and hemosiderin accumulation (2,7). There is no specific diagnostic test for RMT, but Prussian blue staining can be used to indicate byproduct iron from hemoglobin breakdown (dark blue granules) in the tubular lumen or cytoplasm of the lining epithelium.

Differential diagnoses for hemolytic anemia in horses include immune-mediated disease, infectious agents such as equine infectious anemia, piroplasmosis, or ehrlichiosis, and toxic agents such as *Allium* spp. (onion, garlic, or chives), nitrates or nitrites, naphthalene, or *Brassica* spp. (cabbages, turnips, kale, or broccoli) (6,7). Additional causes of methemoglobinemia include nitrate poisoning, chlorate toxicosis, phenothiazine toxicosis, onion (*Allium* spp.) ingestion, congenital methemoglobinemia, flavin adenine dinucleotide (FAD) deficiency, and drugs such as phenacetin and acetanilide (2,3,5). In this case, another horse from the same property concurrently developed similar clinical signs of hemolytic anemia and, given the local epidemiology and that no infectious organisms were visualized in peripheral blood, RMT was considered most likely in this case. The gastrointestinal tract did not have suspicious digesta at post-mortem examination, but euthanasia was performed 3 days after clinical onset, so it is possible the toxic content had been passed by the animal at the time of necropsy.

In general, dark red-to-brown urine can be indicative of hematuria, hemoglobinuria, or myoglobinuria. In cases of hematuria, the urine clears and forms a reddish sediment after centrifugation, which represents erythrocytes. Hemoglobinuria is when hemolysis happens; therefore, the urine contains free hemoglobin that does not clear after centrifugation, accompanied by a reddish or brown coloration in spun serum. Myoglobinuria is less common, but it will show when severe

rhabdomyolysis is present. Free myoglobin in the dark red urine but does not discolor the serum (10). In this case, the skeletal muscle was histologically unremarkable, ruling out rhabdomyolysis and myoglobin casts.

## References:

1. Agrawal K, Ebel JG, Altier C, Bischoff K. Identification of protoxins and a microbial basis for red maple (*Acer rubrum*) toxicosis in equines. *J Vet Diagn Invest.* 2013 Jan 1;25(1):112–9.
2. Alward A, Corriher CA, Barton MH, Sellon DC, Blikslager AT, Jones SL. Red Maple (*Acer rubrum*) Leaf Toxicosis in Horses: A Retrospective Study of 32 Cases. *J Vet Intern Med.* 2006 Sep;20(5):1197–2
3. Bozorgmanesh R, Magdesian K g., Rhodes D m., Von Dollen K a., Walter K m., Moore C e., et al. Hemolytic Anemia in Horses Associated with Ingestion of Pistacia Leaves. *J Vet Intern Med.* 2015;29(1):410–3.
4. Breshears MA, Confer AW. Chapter 11 - The Urinary System1. In: Zachary JF, editor. *Pathologic Basis of Veterinary Disease (Sixth Edition)* [Internet]. Mosby; 2017 [cited 2023 Aug 8]. p. 617-681.e1. Available from: <https://www.sciencedirect.com/science/article/pii/B9780323357753000114>
5. Maxie G. Jubb, Kennedy & Palmer’s Pathology of Domestic Animals: Volume 2. Elsevier Health Sciences; 2015. 422–423 p.
6. Maxie G. Jubb, Kennedy & Palmer’s Pathology of Domestic Animals: Volume 3. Elsevier Health Sciences; 2015. 114–126 p.
7. Plumlee KH. Chapter 25 - Plants. In: Plumlee KH, editor. *Clinical Veterinary Toxicology* [Internet]. Saint Louis: Mosby; 2004 [cited 2023 Aug 6]. p. 437–8. Available from: <https://www.sciencedirect.com/science/article/pii/B032301125X500285>
8. Schwarzwald CC. 44 - Abnormalities of the erythron. In: Hinchcliff KW, Kaneps AJ, Geor RJ, editors. *Equine Sports Medicine and Surgery (Second Edition)* [Internet]. W.B. Saunders; 2014 [cited 2023 Aug 6]. p. 939–73. Available from: <https://www.sciencedirect.com/science/article/pii/B9780702047718000442>
9. Talcott P. Chapter 21 - Toxicologic Problems. In: Reed <https://www.sciencedirect.com/science/article/pii/B9780323443296000218>
10. Wilson DA SM, Bayly WM, Sellon DC, editors. *Equine Internal Medicine (Fourth Edition)* [Internet]. W.B. Saunders; 2018 [cited 2023 Aug 6]. p. 1485. Available from: editor. Myoglobinuria. In: *Clinical Veterinary Advisor* [Internet]. Saint Louis: W.B. Saunders; 2012 [cited 2023 Aug 10]. p. 946–7. Available from: <https://www.sciencedirect.com/science/article/pii/B9781416099796004189>